



EPDM ROOFING SYSTEMS



VERSIGARD® ROOFING SYSTEMS

The VersiGard Roofing Systems incorporate either 45-mil or 60-mil reinforced or non-reinforced EPDM membrane.

VersiGard EPDM non-reinforced membranes are available in standard 45-mil and 60-mil thicknesses. Membrane widths up to 50' and lengths to 200' afford less rooftop seaming for large projects. Custom sizes may be requested.

VersiGard (black) reinforced membranes, in 45- and 60-mil thicknesses, are manufactured with a polyester reinforcement completely encapsulated between two plies of EPDM. Specially developed for Versico's mechanically attached, purlin attached and fully adhered systems, the membrane offers superior fatigue and puncture resistance.

Versico's EPDM narrow-width membranes are pre-cleaned to provide a dust-free surface and enhance splice performance. Additionally, set marks for sheet overlaps and fastener patterns are manufactured right onto the sheet, reducing installation time.

Versico EPDM membranes have been field tested for decades with long-term exposure to UV and ozone resulting in little property change. EPDM Systems are economical to install, offer easy maintenance for owners and achieve Factory Mutual (FM) approvals and (UL) Underwriter's Laboratories fire ratings.

VERSIGARD EPDM WITH QUICK-APPLIED TAPE

One of the most critical portions of a VersiGard EPDM installation can be made faster and easier with Quick-Applied Tape (QAT) Seam Technology, which factory-applies the Seam Tape to the membrane, greatly reducing the time required for completing seams and minimizing your labor costs.

VersiGard EPDM with QAT:

- Improves seaming productivity by nearly 75% and saves labor costs
- Improves the ability to get buildings "in the dry" in less time
- Factory-controlled consistency provides professional finish for any roofing system

90-MIL NON-REINFORCED MEMBRANE

- Provides extra durability and resistance to extreme weather due to its added thickness
- Double the thickness of typical membranes
- Added longevity with the thickest weathering layer available
- More resistant to punctures and hail
- Able to withstand the rigors of foot traffic

VersiGard's 90-mil non-reinforced EPDM membrane combined with an adhered roofing system can be utilized in our 30-year Total Systems Warranty (contractors must be pre-approved to install 30-year systems).

INSULATION

- Versico ISO is recommended for use with all of Versico's VersiGard Roofing Systems and is required in a Versico Total Systems Warranty.
- Standard board size is 4' x 8' with a thickness range from 1" to 4" and is also available in tapered form
- Versico Polyisocyanurate Insulation is UL and/or FM approved as a system component in certain roofing assemblies

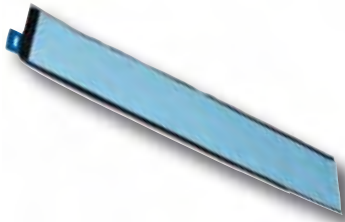
Versico ISO is a polyisocyanurate insulation with foam core insulation boards faced on both sides with a medium-weight fiber-reinforced felt. This dimensionally stable, durable insulation offers maximum thermal efficiency.

VERSICO ROOFING SYSTEM WARRANTIES

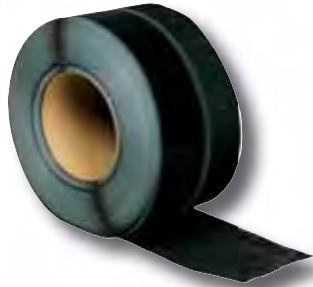
- 5-, 10- and 15-year Membrane Warranties are available. Also, 10-, 15- and 20-year Total Roofing System Warranties are available. Standard wind speed coverage is 55 mph. Additional wind speed warranties are available.
- A warranted system is installed by an authorized Versico Roofing Contractor. A completed warranted system is inspected by a trained Versico Field Service Representative to ensure conformance with Versico specifications.

ACCESSORIES

VersiGard Quick-Applied (QA) Accessories greatly reduce the time required for completing seams and installing flashing, resulting in reduced labor costs. Consistent high quality is achieved with VersiGard QA products. The adhesive application is uniform throughout the installation, and ultimate adhesive strength is achieved in a short period of time.



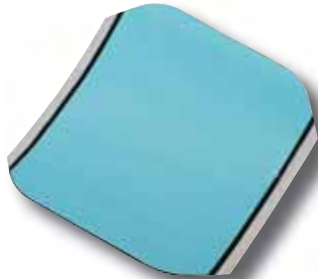
Pourable Sealer Pockets



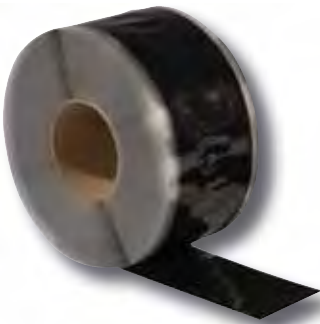
QA RTS



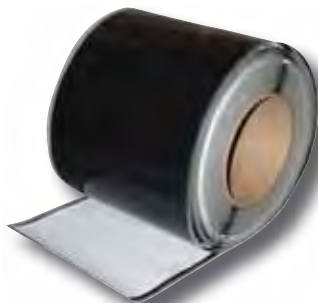
QA Pipe Seals



Inside/Outside Corners

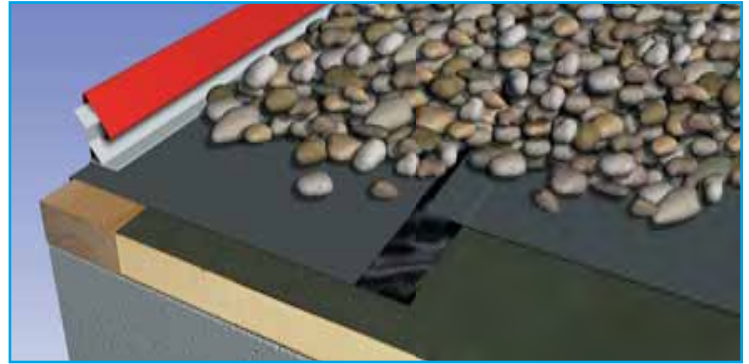


QA Seam Tape



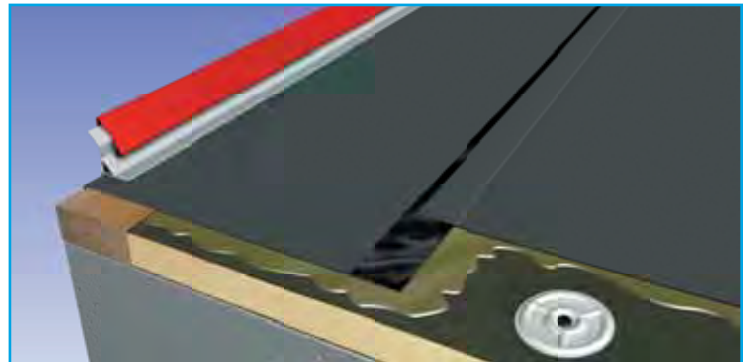
QA Uncured Flashing

EPDM ROOFING SYSTEMS



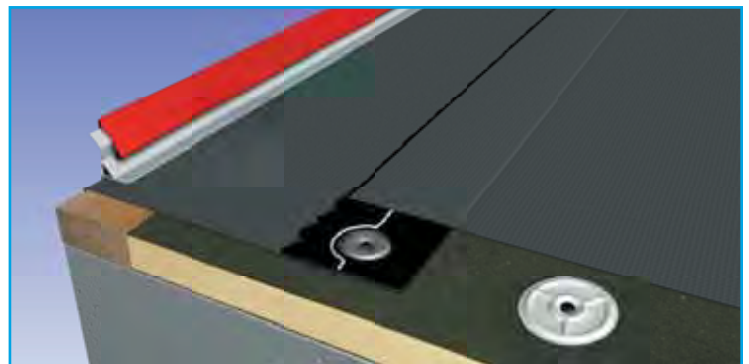
VersiGard Ballasted Roofing System

Ballasted designs incorporate a loose-laid insulation and membrane and the use of ballast or pavers as securement.



VersiGard Fully Adhered Roofing System

Fully Adhered Systems require mechanical or adhesive attachment of the insulation and bonding of the membrane to the insulation.



VersiGard Mechanically Attached Roofing System

Mechanically Attached Systems require mechanical attachment of the insulation to the deck and mechanical attachment of the membrane within the seam area.

* Please see VersiGard accessories literature for a more complete listing of accessories.



VERSIGARD

EPDM ROOFING SYSTEMS

VERSIGARD .045" & .060" NON-REINFORCED EPDM SHEET

Typical Properties and Characteristics

Physical Property	Test Method	ASTM SPEC. (Pass)	.045" & .060" Standard
Tolerance on nominal thickness, %	ASTM D412	±10	±10
Tensile Strength, min, psi (MPa)	ASTM D412	1305 (g)	1650 (11.3)
Elongation, Ultimate, min, %	ASTM D412	300	480
Tear Resistance, min, lbf/in (kN/m)	ASTM D624 (Die C)	150 (26.3)	200 (35.0)
Factory Seam Strength, min.	Modified ASTM D816	Membrane Rupture	Membrane Rupture
Resistance to Heat Aging* Properties after 4 weeks @ 240°F (116°C)	ASTM D573		
Tensile Strength, min, psi (MPa)	ASTM D412	1205 (8.3)	1500 (10.3)
Elongation, Ultimate, min %	ASTM D412	200	225
Tear Resistance, min, lbf/in (kN/m)	ASTM D624	125 (21.9)	215 (37.6)
Linear Dimensional Change, max, %	ASTM D1204	±1.0	-0.4
Ozone Resistance* Condition after exposure to 100 pphm Ozone in air for 168 hours @ 104°F (40°C) Specimen is at 50% strain	ASTM D1149	No Cracks	No Cracks
Brittleness Temp., max, deg. F (deg. C)*	ASTM D746	-49 (-45)	-67 (-55)
Resistance to water Absorption* After 7 days immersion @ 158°F (70°C) Change in mass, max, %	ASTM D471	+8.0, -2.0	+2.0
Water Vapor Permeance* max, perm	ASTM E96 (Proc. B or BW)	0.1	.05
Resistance to Outdoor (Ultraviolet) Weathering* Xenon-Arc, 7560 kj/m ² total radiant exposure at .70 W/m ² irradiance, 176°F (80°C) Black Panel Temp.	ASTM G155	No Cracks No Cracking	No Cracks No Cracking

* Not a Quality Control Test due to the time required for the test or the complexity of the test. However, all tests are run on a statistical basis to ensure overall long-term performance of the sheeting.

* Please see VersiGard .045" and .060" Reinforced EPDM Technical Data Bulletin for reinforced EPDM properties.

